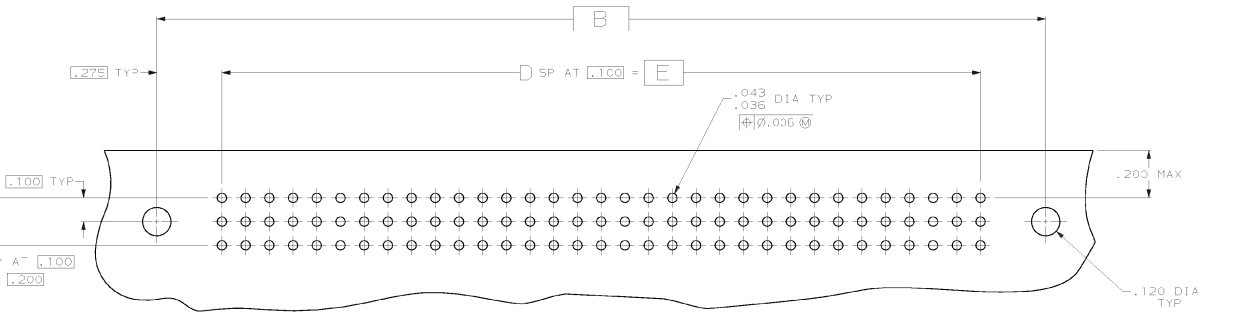
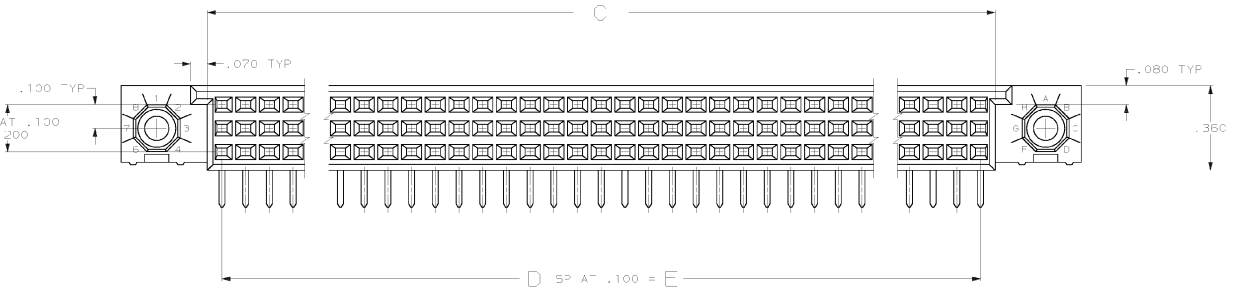
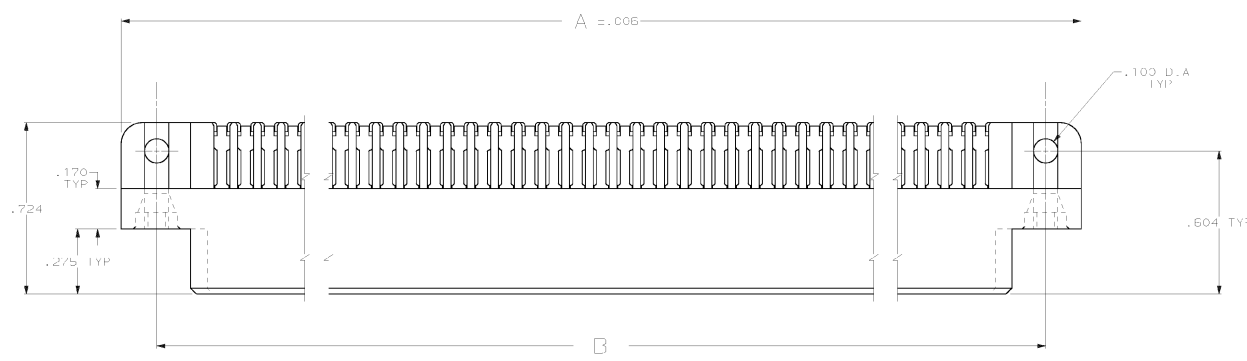
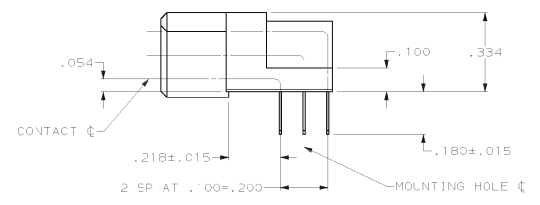


REV	DATE	BY	CHK	APP'D	DESCRIPTION	DATE	APP'D
B	11/18/94				REVISION ON CAJ TEL EUN AU5477	6-19-91	-
C					REVISED PER EUN 003 1013 93 T.S.	6-29-99	JW
D					REVISED PER EUN 003 2084193 T.S.	2-19-01	SS
E					ECON. 0010-1684-94 TH	11/18/94	NFS
F					PER EC 0503-0522-97 T.S.	9-22-97	JW
G					REV PER EC 0118-C199-01	4 NOV 01	WM
H					REV PER 0512-0464-02	05-04-01	WM



- △ HOUSING MATERIAL: THERMOPLASTIC, BLACK.
- △ CONTACT MATERIAL: BERYLLIUM COPPER.
- △ CONTACT FINISH: .00050-.000100 NICKEL UNDERPLATE ALL OVER WITH .000030 GOLD IN CONTACT AREA AND .000100-.000200 TIN-LEAD PLATED POSTS.



OBsolete	7.900	79	8.02±	8.450	8.750	240	534044-8
OBsolete	7.400	74	7.52±	7.950	8.350	225	534044-7
OBsolete	6.900	69	7.02±	7.450	7.750	210	534044-6
OBsolete	5.400	54	5.52±	5.950	6.250	165	534044-5
OBsolete	4.900	49	5.02±	5.450	5.750	150	534044-4
OBsolete	3.900	39	4.02±	4.450	4.750	120	534044-3
OBsolete	3.100	31	3.22±	3.650	3.950	96	534044-2
OBsolete	2.900	29	3.02±	3.450	3.750	90	534044-1

	E	D	C	B	A	NO OF POSN	PART NUMBER
NO NET SCALE PRINT. UNLESS SPECIFIED DIMENSIONS IN INCHES TOLERANCES ON 1 2 FLD DEC ± .005 ANGLES MATERIAL FINISH WEIGHT							
DR 6-17-R1 3 0413001 B6 CHC 12/10/91 DAVID HOFMAN APD 12/10/91 WAVE HILLHINES APD 12/10/91 VAN WEBSTER PRODUCT SPEC 108-1099							
AMP AMP Incorporated Harrisburg, PA 17105-3606							
ASSEMBLY, RECEPTACLE, TWIN BEAM CONNECTOR, 3 ROW, 2 MOUNTING HOLES, .180 POST LENGTH							
SIZE 00779 DRAWING NO 534044 SCALE 4:1 SHEET 1 OF 1							